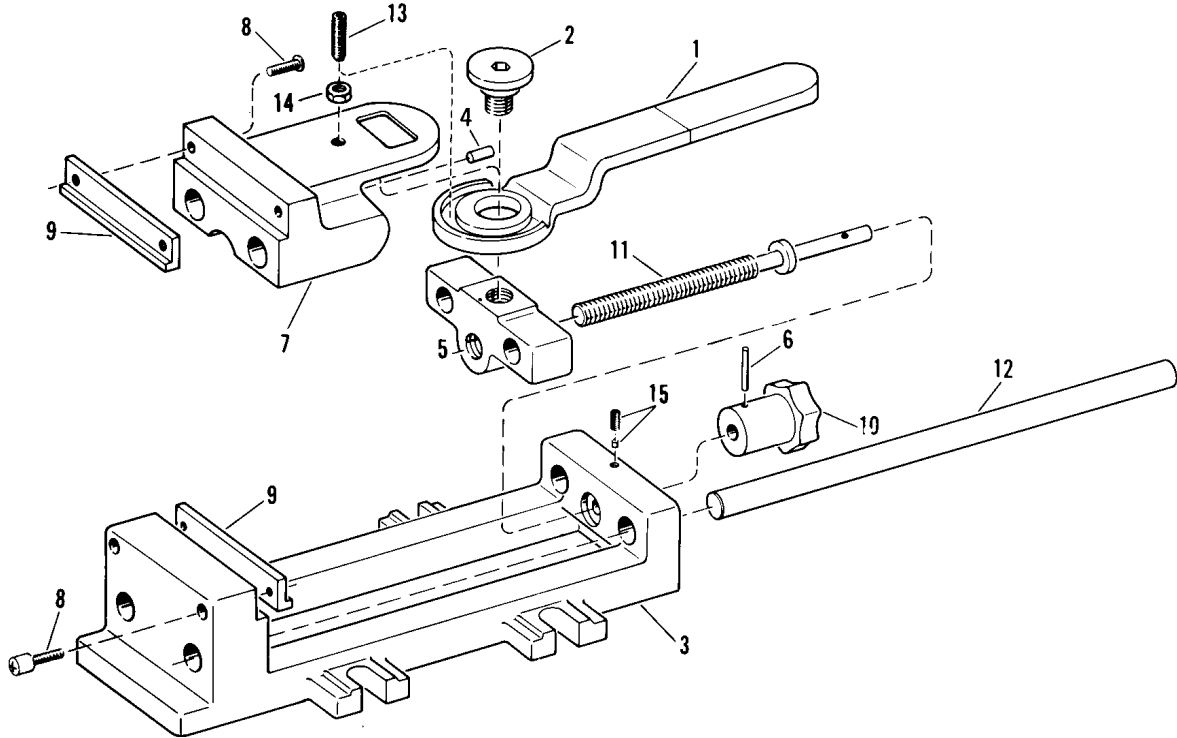


CAMLOCK VISE heinrich



MODEL 4-CL

| Index No. | Part Name | Part No. | Price |
|-----------|-----------------------------------|----------|---------|
| 1 | Handle Lever | 4CL-1 | \$75.80 |
| 2 | Lever Shoulder Screw | 4CL-2 | 30.68 |
| 3 | Body Casting (Note 1) | 4CL-3 | -- |
| 4 | Wear Plug | 4CL-4 | 6.68 |
| 5 | Cam Support Adjusting Nut | 4CL-5 | 60.16 |
| 6 | 1/8 x 7/8 Rollpin | 4CL-6 | 1.26 |
| 7 | Jaw Casting | 4CL-7 | 124.08 |
| 8 | 1/4-20 x 3/4 Screw (4 required) | 30-3/4 | 2.08 |
| 9 | Jaw Inserts, regular (set of 2) | 419 | 23.46 |
| 9 | Jaw Inserts, hardened (set of 2) | 419H | 34.29 |
| 10 | Hand Knob | 4CL-12 | 21.66 |
| 11 | Center Adjusting Screw | 4CL-13 | 48.73 |
| 12 | Guide Bar (2 required) | 4CL-14 | 18.80 |
| 13 | 1/4-20 x 3/4 Screw | 4CL-15 | 4.87 |
| 14 | 1/4-20 Nut | 4CL-16 | 0.54 |
| 15 | 1/4-28 x 1/2 Set Screw, with slug | 33-18 | 3.25 |

Note 1. Price not shown, as replacement body casting is not available.

WHEN ORDERING PARTS, INDICATE PART NUMBER, MODEL NUMBER AND PRICE.

MAINTENANCE:

Locking lever may be removed as follows: Loosen lock nut (14) and remove set screw (13). Jaw casting (7) may then be moved to expose handle lever (1) for removal.

Clean and check each part for wear or damage. Replacement parts are available for immediate shipment from factory stock, or you may order through your local Heinrich distributor.