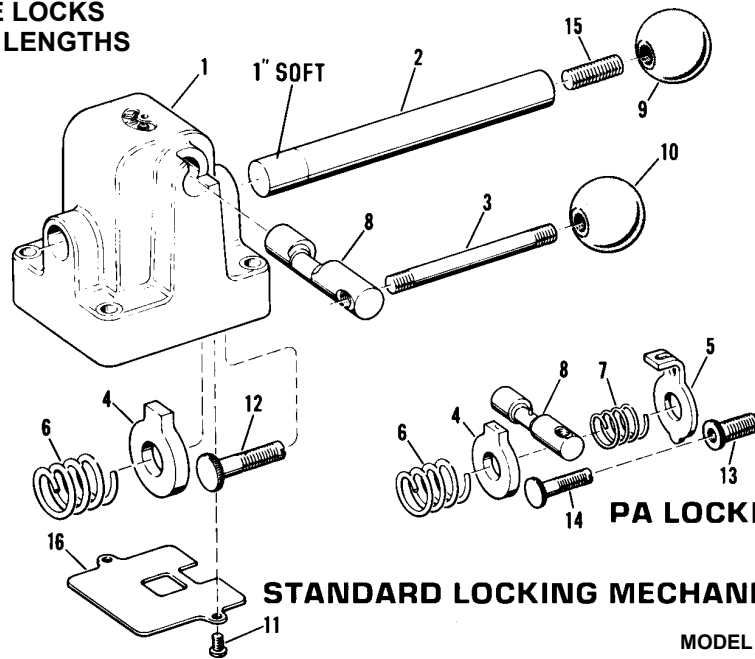




Grip-Master FIXTURE LOCKS

PRICES OF FIXTURE LOCKS WITH SPECIAL BAR LENGTHS

	2-FL	2-PA
10"	\$90.17	109.77
12"	92.78	115.00
14"	94.09	116.96
16"	97.35	118.92
18"	100.62	121.53
20"	103.24	125.45
24"	105.85	128.07
	9-FL	9-PA
12"	112.38	137.21
14"	115.00	134.60
16"	118.92	145.05
18"	121.53	147.67
20"	125.45	151.59
24"	128.07	154.20



Index No.	Part Name	MODEL NUMBER			
		2-FL 2-PA**		9-FL 9-PA**	
		Part No.	Price	Part No.	Price
1	Body Casting (Note 1)	2-FL	--	9-FL	--
2	Bar, Locking, Standard	213-9"	\$24.44	913-10"	\$34.78
2	Bar, Special	213-10"	27.26	--	--
2	Bar, Special	213-12"	32.90	913-12"	47.94
2	Bar, Special	213-14"	34.78	913-14"	55.46
2	Bar, Special	213-16"	41.36	913-16"	62.04
2	Bar, Special	213-18"	48.88	913-18"	69.56
2	Bar, Special	213-20"	55.46	913-20"	76.14
2	Bar, Special	213-24"	62.98	913-24"	83.66
3	Handle	GM-3415	4.51	6815	7.04
4	Locking Ring	SV-3416	28.88	SV-6816	37.90
5	Holding Ring	PA-3416**	23.46	PA-6816**	34.29
6	Spring, Locking	GM-417	--	6817	--
7	Spring, Holding	PA-3417**	14.44	PA-6817**	10.83
8	Crank	GM-3418	19.85	GM-6818	37.90
8	Crank, with 1/8" Pin	GMPA-3418*	26.17	GMPA-6818**	39.71
9	Knob, Black -- 1" Dia., 1/4-20 thread	SV-3421	6.89	--	--
9	Knob, Red -- 1" Dia., 1/4-20 thread	RSV-3421**	4.33	--	--
9	Knob, Black -- 1 1/2" Dia., 3/8-24 thread	--	--	SV-6821	4.33
9	Knob, Red -- 1 1/2" Dia., 3/8-24 thread	--	--	RSV-6821**	8.66
10	Knob, Black -- 1 1/8" x 1 7/16" oval, 3/8-16 thread	OA-3421	4.33	--	--
10	Knob, Red -- 1 1/8" x 1 7/16" oval, 3/8-16 thread	ROA-3421**	7.58	--	--
10	Knob, Black -- 1 1/2" Dia., 3/8-24 thread	--	--	SV-6821	4.33
10	Knob, Red -- 1 1/2" Dia., 3/8-24 thread	--	--	RSV-6821**	8.66
12	Screw	SV-31	9.02	SV-31	9.02
13	Adjusting Screw -- Female	PA-32**	10.83	PA-32**	10.83
14	Adjusting Screw -- Male	PA-33**	10.83	PA-33**	10.83
15	Stud	3423	2.35	6823	2.53
16	Cover Plate	3437	3.88	6837	6.59

Recommended spare part to be retained in stock at all times to support each unit: Index (4) locking ring, Index (2) bar.
SEE OPERATION AND MAINTENANCE INSTRUCTIONS FOR GRIP-MASTER VISES ON THE GRIP-MASTER VISES PAGE

WHEN ORDERING PARTS, INDICATE PART NUMBER, MODEL NUMBER AND PRICE.